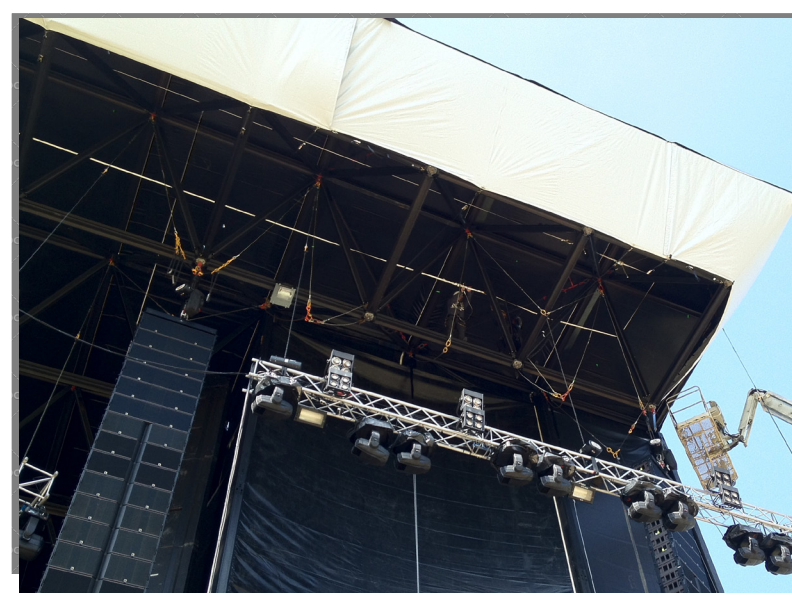


trustus®

- The New Stage Concept





Go Further - Go Safer - Go Wider - Go Higher

With the Trustus stage you can go further and safer than ever before. With its' approval to windspeeds up to 120 km/hour, Beaufort 12, the stage can resist even the most challenging weather conditions.

With up to 50 meters width, 32 meters span, 22 meter clearance and 80 tons of payload - there will be space and capacity enough for the most complex productions ever seen.

Cost Efficiency

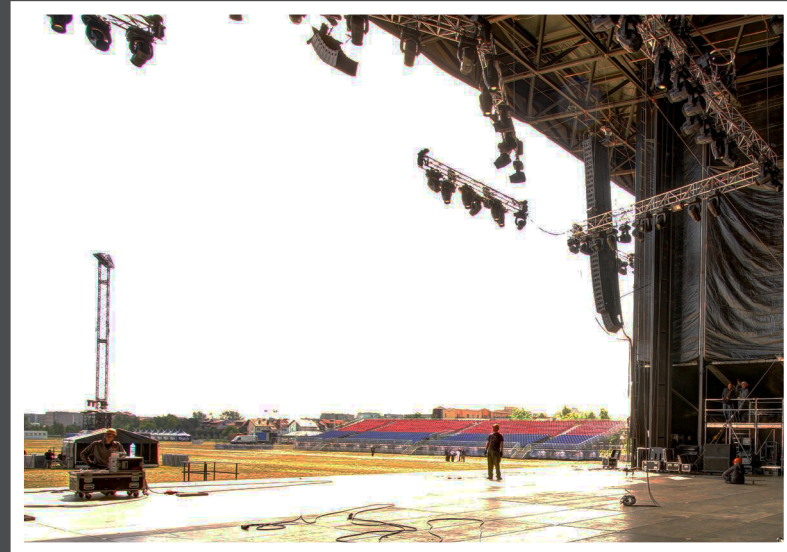


Trustus is a self-erecting stage construction supported by four 350 tonnes towers and can be built within only 48 hours.

The Trustus stage can be built without any demand for mobile cranes, if time window, accessibility and site cost issues require it. Site fortification can be significantly reduced or even unnecessary.

Furthermore the Trustus stage can be built without any need for local riggers and scaffolders.

Sight Lines



Improvement of sight lines and reducing kill seats have been one of the main tasks designing the new Trustus stage. With its 32m span, 22m clearance and huge overhang, the Trustus is the ultimate solution in modern staging.

No stage construction can boast same numbers nor cut down counts and cost like the Trustus stage.

Advanced Engineering

- Makes Trustus the most reliable stage construction ever

For decades mobile staging has been a complicated balance between safety and possibilities.

With the Trustus stage you will have both safety and possibilities in one construction. For years the Trustus engineering team have worked on designing and refining the the most advanced stage construction ever.

With this dedication, the Trustus stage has all ready provided several concerts and festivals sites with reliability and safety.

Trustus

Trustus began its life in Denmark.

Skive '10

Outdoor festival

The first project for the Trustus stage, was at Skive Festival in Denmark.

All went well and the stage was ready for the rest of the world.

Sonisphere '12

Outdoor festival

Early in 2012 Trustus Rentals went to Poland to the Sonisphere Festival, with a full sized stage.



Halden '12

Classic Concert

The project in Halden, Norway broad the Trustus flexibility to the test, where there was an horizontal level difference of 2 metres.



Provinsirock '10

Outdoor festival

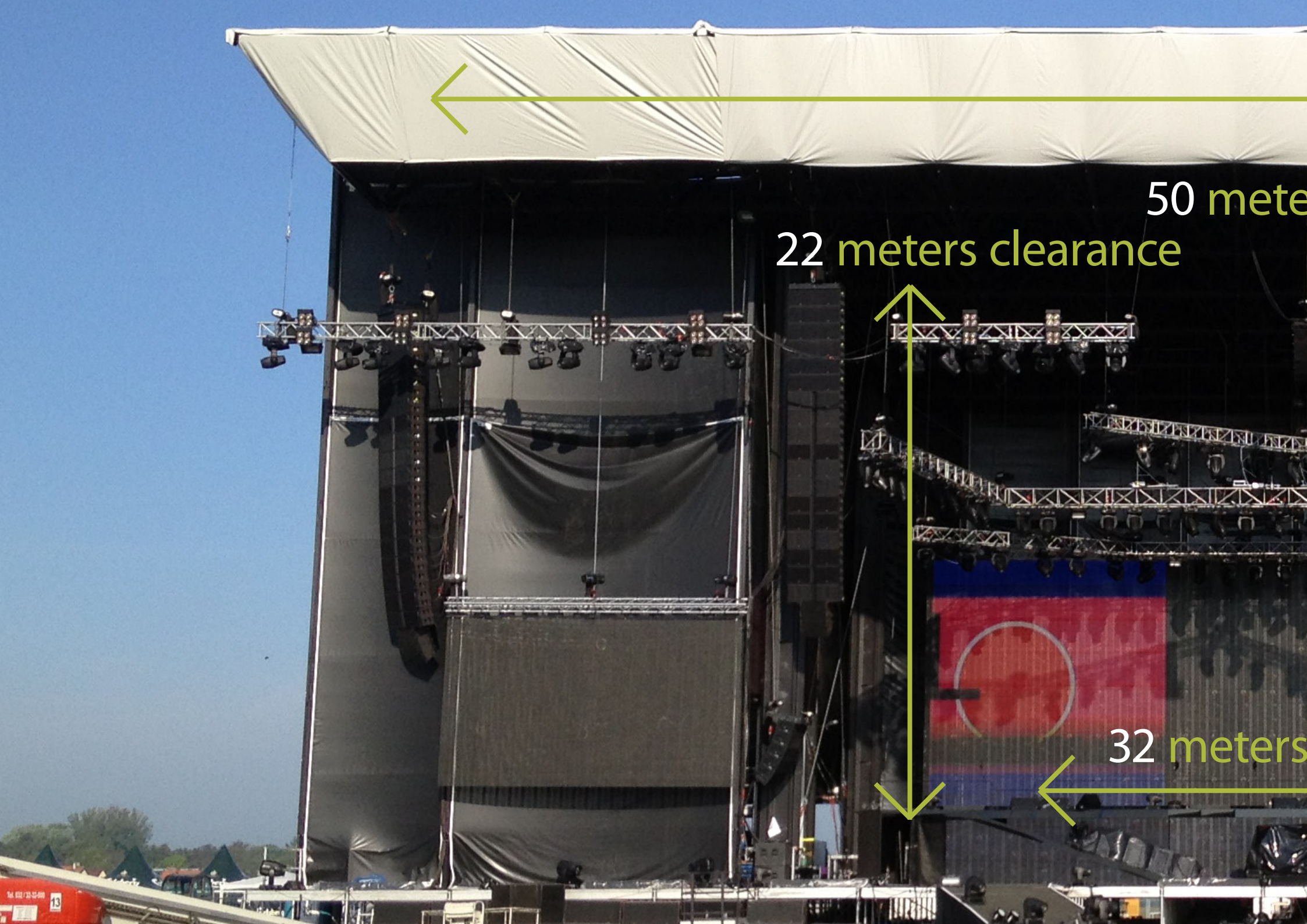
In 2010 Trustus Rentals drove to Finland to support the Provinsirock Festival.

Impact '12

Outdoor festival

In the summer 2012, the Trustus stage was deployed at the Impact Festival in Poland, with a adapted stage size.





50 meters

22 meters clearance



32 meters

ers width

span





Not just another
Stage

Outdoor staging can be difficult and be interrupted by a lot of challenges.

The Trustus 350 tonnes towers and floor design enables the stage to be build on uneven surface with up to 2 meters of elevation difference.



Premium Staging

- offers premium working areas and VIP facilities. The Trustus stage comes with a huge amount of extra spaces for VIP's, up to 260 square meters of side storage on stage and loading docks as per demand.

VIP platform



- customised VIP-areas

Loading dock



- flexible loading dock

Side Storage



- 2 times 7.2 x 18 meters side storage

Safe Staging

Safety has been the main target in engineering and designs of the Trustus Stage. By using highly complicated formulas and advanced engineering tools, combined with the best materials, the Trustus stage has been approved according to the TÜV standard.

The Trustus stage is approved to wind speeds up to 120 km/hour, Beaufort 12 with full payload and is therefore one of the most rigid stages in the world, assuring that the show will go on even under severe weather conditions.

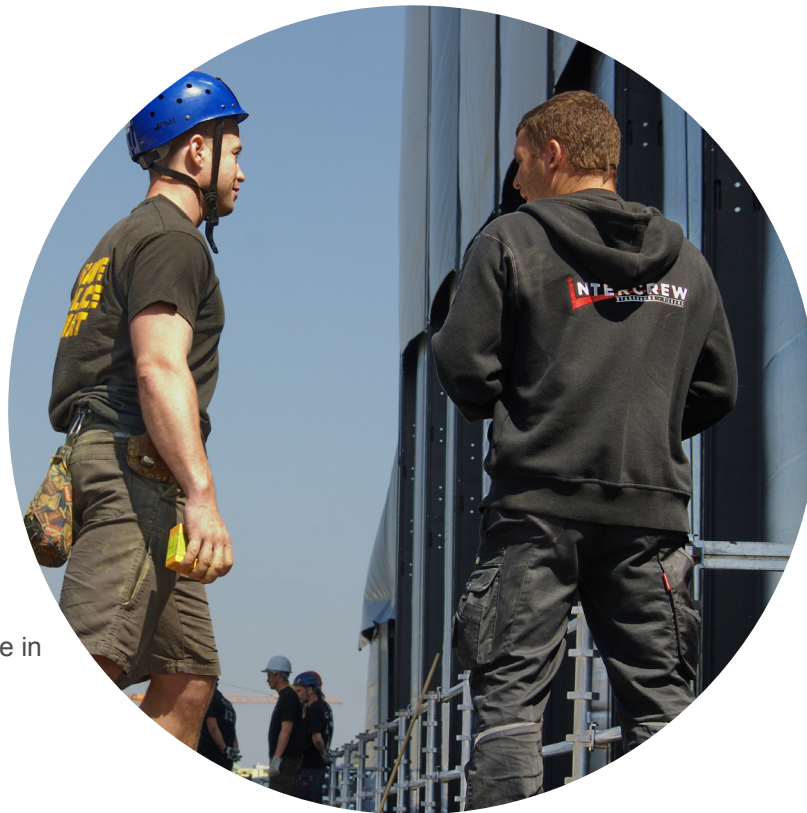


All static calculations have been made
by Dr. Roland Ondra

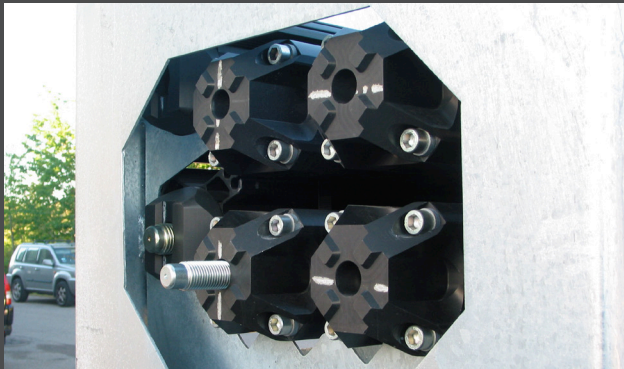
Not just another Team

Trustus Rentals provides all the crew that is needed for building the Trustus stage.

Our staff and team leaders are all up to date with the latest education and rigger certification. They all have many years of experience in stage building and production management.



LEAN Management



All handling of the Trustus stage takes part in Lean. Through Lean, all steps of handling, building and production are as cost effective as possible.

Trustus Building

Step 1



Step 2



Step 3



Step 4





Trustus Roof

Advanced engineering lies behind the roof construction boosting some 80 tonnes of payload.



Trustus Towers

Each of the four towers of the Trustus stage can be erected by itself, with the Trustus Climber Crane.

This creates possibilities to erect the towers where there is no room for mobile cranes.



Trustus Flooring

The flooring of the Trustus Stage is of the brand Nordic Staging Systems. The system is capable of 750kg/sqm of height up to 2,5 meters and is approved by the TÜV-standard.

The Nordic Staging Systems is lightweight, fast to build and very rigid.



Trustus Rigging

Each of the rigging notes in the Trustus Roof, has a load capacity of 5 tonnes.

Each note can provide up to 5 individual rigging points.



Trustus Ballasts

The Trustus Storage Containers can be used as additional ballast depots if needed.

The demand for additional ballast, depends solely on the roof layout and payload placement.



Trustus Logistics

The Trustus stagemodules and containers has been optimized to save space during trucking and thereby reduce CO2 emissions.

The Trustus stage can fit into only 6-10 trucks depending the stage size.

Trustus Building

Example of a production plan, 2 day festival with production day - daytime building.

Crew

Day	Task	Start	Lunch	Coffee	End	Diner	Trustus Crew head	Trustus Crew	Telescopic Driver	Forklift Driver	Local Stagehands
Day 1	Truck unloading	06.00					5			4	
	Build up	08.00	12:00-13:00	16:00-16:30	20.00	20.00	5	13	3	2	6
Day 2	Build up	08.00	12:00-13:00	16:00-16:30	20.00	20.00	5	13	3	2	6
Day 3	Build up	08.00	12:00-13:00	16:00-16:30	20.00	20.00	5	13	3	2	16
Day 4	Festival Prod.	08.00	12:00-13:00	16:00-16:30	20.00	20.00	5	13	0	0	0
Day 5&6	Show	08.00	12:00-13:00	16:00-16:30	20.00	20.00	5	13	0	0	0
Day 7	Tear down	08.00	12:00-13:00	16:00-16:30	20.00	20.00	5	13	3	2	16
Day 8	Tear down	08.00	12:00-13:00	16:00-16:30	20.00	20.00	5	13	3	2	6
	Truck Loading	16.00	12:00-13:00	16:00-16:30	22.00	20.00	5	0	0	4	0

Subject to sitelocations and prices

Machinery

Day	Status	Start	End	Boom lift 27m	Telescope Lift	Forklift	Truck Crane*	
							Arrive	End
Day 1	Truck unloading	06.00	12.00	0	0	4		
	Build up	08.00	20.00	1	3	2	12.00	20.00
Day 2	Build up	08.00	20.00	1	3	2		
Day 3	Build up	08.00	20.00	1	3	2		
Day 4	Festival Prod.	08.00	20.00	1	0	0		
Day 5&6	Show	08.00	20.00	1	0	0		
Day 7	Tear down	08.00	20.00	1	3	2		
Day 8	Tear down	08.00	20.00	1	3	2	08.00	15.00
	Truck Loading	16.00	22.00	0	0	4		

**Optional for faster building*

Trustus Specifications

Wind			
Stage in use	The stage will be useable in all windzones to more than Beufort 10**	102 km/hour	10 Beaufort
Stage out of use	The stage will stand in all wind zones to more than beaufort 12*	120 km/hour	12 Beaufort
The stage			
Clearence	15-22 meters		
Span	22-32 meters		
Width	30-50 meters		
Floor	350-1500 sqm.		
Side storage	100-700 sqm		
Riggingnotes	5 tonnes each		
Roof capacity	80 tonnes		

**All caculations made by Dr. Roland Ondra*

*** Under optimal conditions*

Logistics	6-10 trucks
Trustus Crew	12-20 workers
	4 riggers
	2 instructors
Building hours	4 x 12 hours**
Dismantle hours	2 x 12 hours**



Lars Aunsberg

CEO





Trustus Rentals

- the connection between creativity, safety and economy

The Trustus Rentals company has the mission to provide the world's largest festivals and concerts with the largest, most reliable, safest and cost-effective stages.

Unleash your creativity within the beauty and strength of the Trustus, with its' black aluminium space roof standing "floating" on only four legs.

Trustus - Your next stage.

Trustus Rentals

www.trustusrentals.com

Helge Nielsens Allé 5

DK-8723 Løsning

Denmark

Phone: +45 70265222

Contact

Lars Aunsberg

la@trustusrentals.com

Direct: +45 27102624